

ALUMINUM FRAMING AND CUSTOM  
MACHINED SOLUTIONS FOR INDUSTRY

**MiniTec**   
Framing Systems, LLC



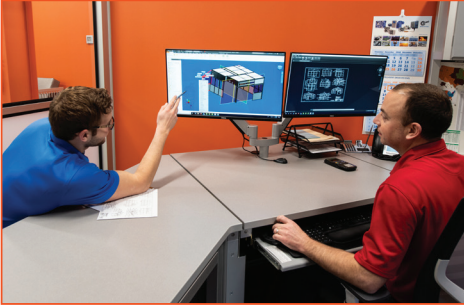
**Manufacturer of custom solutions integrating precision T-slotted aluminum extrusions and custom machined parts.**

*The modular design of T-Slotted extrusion provides extremely fast assembly and modification, perfect for prototyping.*

**Next day turnaround available.**

## SERVICES

### Engineering



Our professional engineering staff can guide you every step of your project.

### Machining



We offer a variety of custom bending, routing, and parts milling services via our CNC machining department.

### Assembly



Our assembly department offers completely built custom solutions for our customers.

### Integrated Solutions



Seamless integration of MiniTec extrusion, machined parts, and components provide our customers with fully assembled turnkey solutions.

### Installation



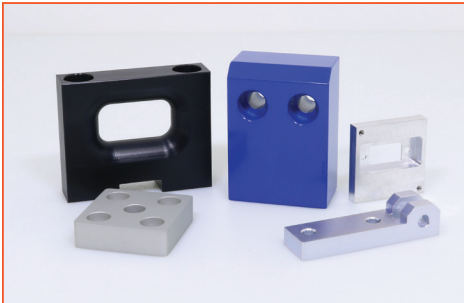
The Minitec ISN Certified Installation Crew is able to install custom solutions on location.

### Kitting



We provide all the processed extrusion, components, and machined parts for our customers to assemble their systems onsite.

### Secondary Services



We offer our customers secondary operations such as anodizing, plating, and powder coating.

### Bulk Shipments



Customers can buy whole boxes of profile and components to completely process their designs themselves.

### Local Deliveries



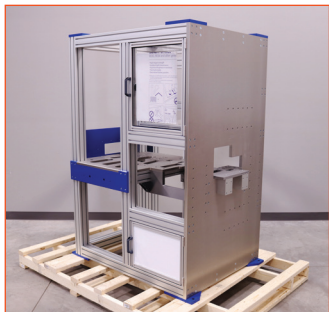
We provide our local customers with safe and fast shipping options.



*Minitec provides the most complete, flexible, and easy –to-use T-slotted aluminum framing system on the market today. Our unique profile system has proven itself in many sectors through reliability and flexibility.*

## MINITEC INTEGRATED APPLICATION SOLUTIONS

**Machine Frames**



**Machine Guarding**



**Enclosures**



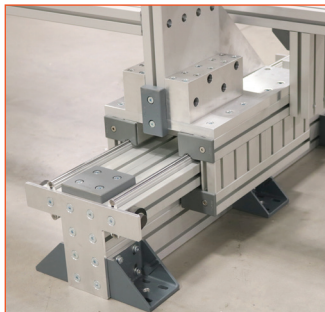
**Machine Bases**



**Ergonomic Workstations**



**Linear Slides**



**Machine Enclosures**



**Conveyors**



**Barrier Guarding**



**Carts**



**Counterweighted Doors**



**Tables**



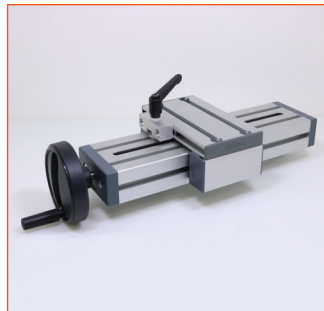
**Drawer Applications**



**Guarding/Wall Sections**



**Slides/Leadscrews**



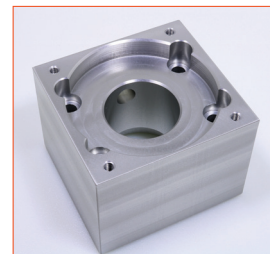
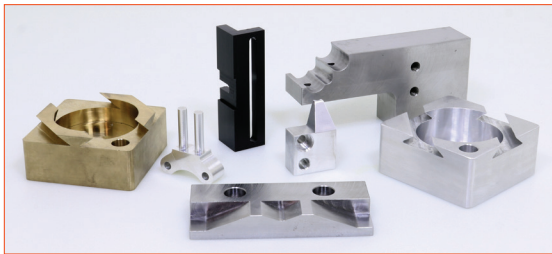
**Cleanrooms**





## PARTS MILLING

### Haas VF2SS, VF4 and VF6SS



VF2SS: 15000 RPM Spindle (X30" Y16" Z18") with probe system, VF4: 10000 RPM Spindle (X50" Y25" Z18")

VF6SS: 15000 RPM Spindle (X64" Y28" Z27") with probe system

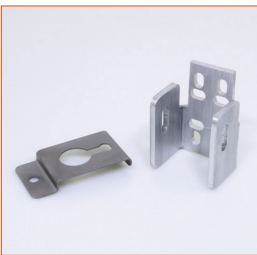
### Fryer Open Machining Center



VB-60: 8000 RPM spindle (X60" Y28" Z19") Accommodates long pieces that won't fit in an enclosed mill.

## BENDING

**Pressbrake** – custom bending of plastic and aluminum.



175 ton, 12' bed, 7" open (3/8" aluminum, 1/4" steel)

## SURFACE FINISHING

**Only local 48" TimeSaver!**

**TimeSaver** – deburrs processed metal and provides a consistent straight grain finish.



Large 4' wide by 6" opening

## OTHER CAPABILITIES

**Shearing** – 1/4" mild steel with a 10 foot wide bed.

**Turning** – ET-18: 2000 RPM 2" thru bore and 30" Max Travel.

**Sand Blasting** – for small and medium sized parts.



## MACHINING CAPABILITIES

- *Extremely **FAST** Lead Times*
- ***Next Day Service Available***
- *Seamless Machined Part Integration on Turnkey Assemblies*
- *High Quality Precision Machining*
- *Single Part to 1000 part production runs*



## PARTS INTEGRATION

*We are proficient at machining and assembling parts to customer specifications.*



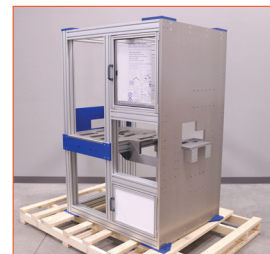
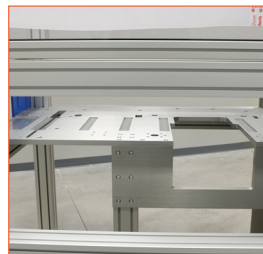
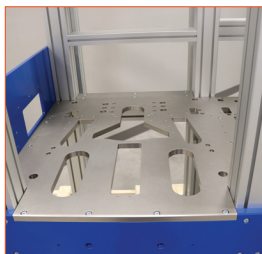
## LARGE PLATE MILLING

*Gantry Routers – largest plate capacity in the local area*



*GR-712: 8100 RPM spindle: (X145" Y85" Z11")*

*GR-510: 5000 RPM spindle: (X120" Y60" Z7.5")*



*We integrate custom machined parts into fully assembled solutions.*

## CNC ROUTING

*Pacer & Tecno Routers – custom rout both plastic and aluminum.*



*Pacer CNC Router: (x144" Y60" Z6.5") VAC table*

*Tecno Router: (X120" Y60" Z3") VAC table*





5602 County Road 41  
Farmington NY 14425  
PH 585 924 4690  
sales@minitecframing.com  
minitecframing.com



*Multi-million dollar inventory of T-slotted aluminum extrusion, components, aluminum, and plastic panels warehoused onsite.*



*MiniTec has over 20 years of experience providing custom solutions to meet customer's unique needs.*